



EDWIN STEPHEN ROUSE (1849–1931)

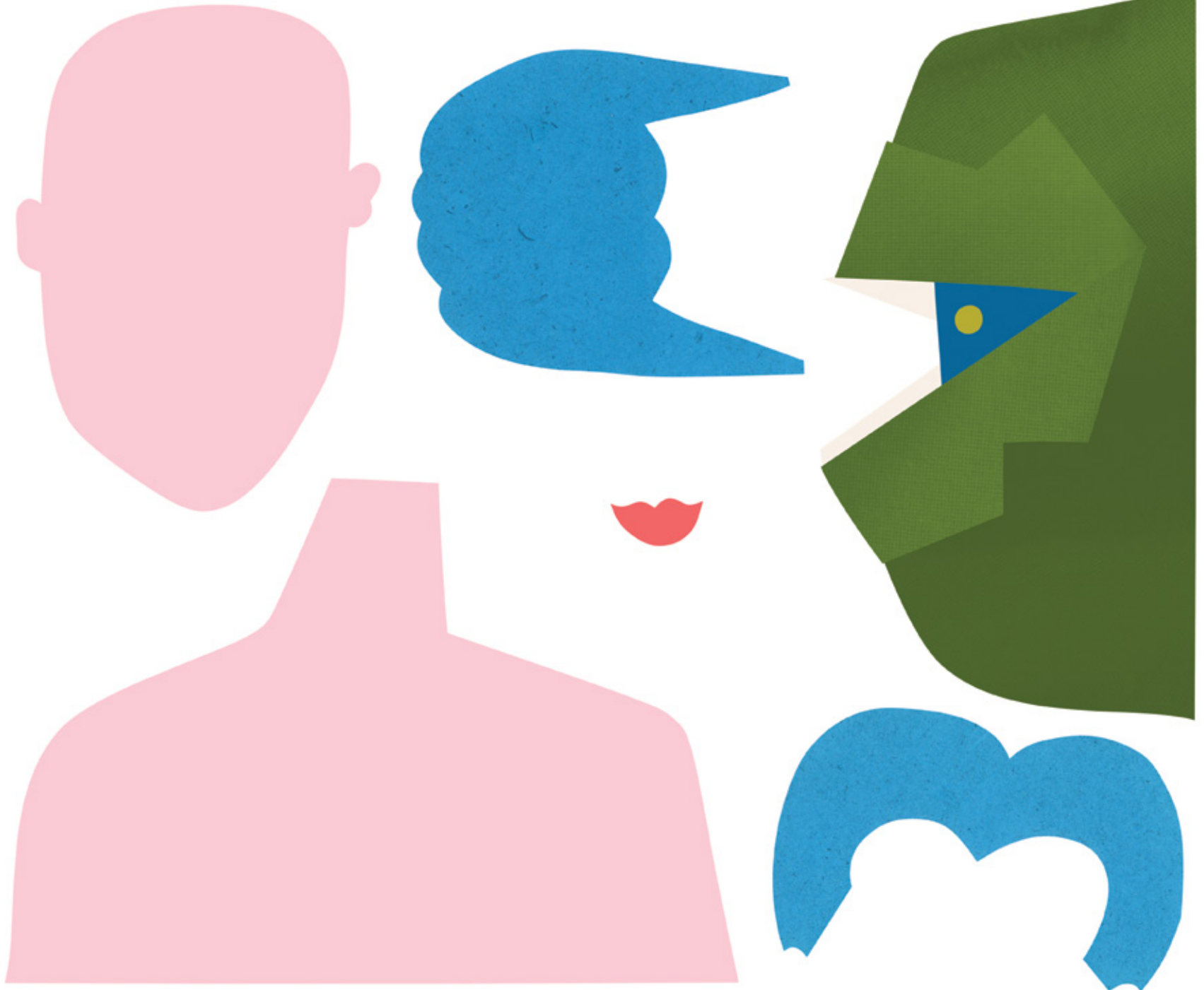
Edwin Stephen Rouse was the fifth and youngest child of Edwin and Hannah Rouse. He moved to his family's property, Rouse Hill House, when he was five years old, and by the age of 12 he had inherited the property. In 1874 he married Eliza Ann (Bessie) Buchanan, and they had two daughters, Nina and Kathleen. Edwin Stephen loved horses and horse racing. He lived at Rouse Hill House until his death in 1931.

METHOD

1. Cut out the shapes on the right.
2. Arrange the shapes on a blank piece of paper to make a face and torso.
3. Using coloured paper, cut out any extra features you would like to add to your portrait, such as eyes, a nose or clothing. Look at the original portrait for inspiration.
4. Glue everything down.
5. Finish your portrait with a frame made from large strips of coloured paper.

SHARE A PHOTO OF YOUR CREATION

@sydlivmus @_elinmatilda
#SLMchildren





**ELIZA ANN (BESSIE) ROUSE
(1843–1924)**

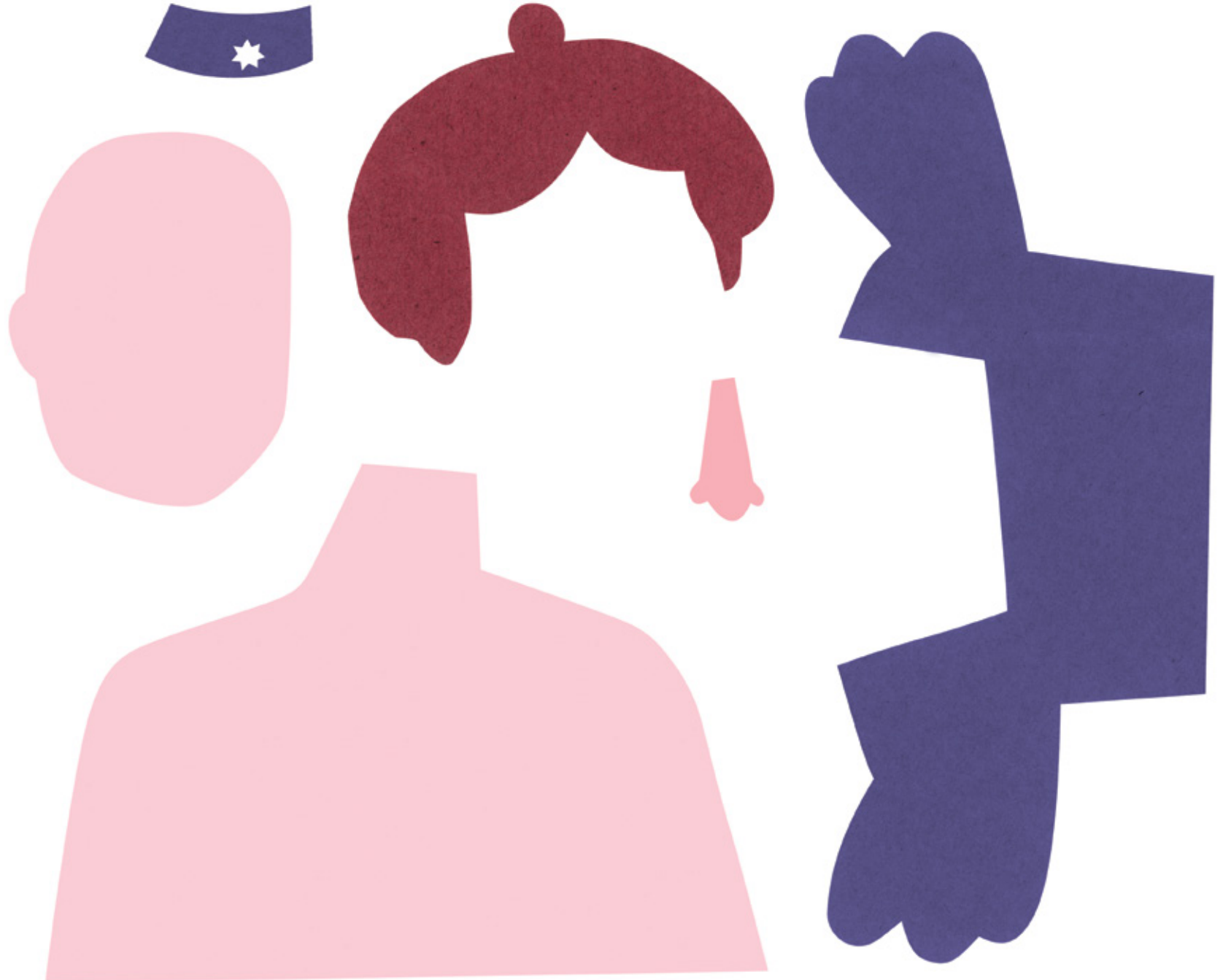
Bessie was the only child of William and Elizabeth Buchanan. She was a talented artist and decorator and worked in a wide range of mediums, including pencil, watercolour, oil, decoupage and needlework. She married Edwin Stephen Rouse in 1874 and had two daughters, Nina and Kathleen. Bessie lived at Rouse Hill House for 50 years, and a number of her artworks are held in the collection at the property.

METHOD

1. Cut out the shapes on the right.
2. Arrange the shapes on a blank piece of paper to make a face and torso.
3. Using coloured paper, cut out any extra features you would like to add to your portrait, such as eyes, a nose or clothing. Look at the original portrait for inspiration.
4. Glue everything down.
5. Finish your portrait with a frame made from large strips of coloured paper.

SHARE A PHOTO OF YOUR CREATION

@sydlivmus @_elinmatilda
#SLMchildren





**KATHLEEN BUCHANAN ROUSE
(1878–1932)**

Kathleen Buchanan Rouse was the younger daughter of Edwin Stephen and Bessie Rouse. Kathleen and her older sister, Nina, had a seemingly ideal childhood, filled with creativity and play. They received a very good musical education and Kathleen was a keen pianist. She enjoyed an active social life, attending balls and performing in local amateur concerts and theatre. As an adult she loved travelling and visited many countries, including England and China.

METHOD

1. Cut out the shapes on the right.
2. Arrange the shapes on a blank piece of paper to make a face and torso.
3. Using coloured paper, cut out any extra features you would like to add to your portrait, such as eyes, a nose or clothing. Look at the original portrait for inspiration.
4. Glue everything down.
5. Finish your portrait with a frame made from large strips of coloured paper.

SHARE A PHOTO OF YOUR CREATION

@sydlivmus @_elinmatilda
#SLMchildren

